

# Micronesia

## Product Catalogue



# CONSOLIDATION EXPERTS

Established in 1998, Pacific Islands International is a trusted one-stop shop for the building and construction needs of the Pacific Islands.

With 25 years experience, Pacific Islands International (PII) can source from its diverse supply chain and specializes in delivering the best quality building materials sourced globally to meet your requirement.



PII has used Malaysia and China as the main consolidation hubs for the last 25 years, and are the experts in supplying quality building materials. All products that can be consolidated from either Malaysia or China are marked with a tick.

Services Include:

- Sourcing and Procurement
- Local Transportation
- Container Packing and Consolidation
- Quality Control and Inspection
- Shipment Direct to Your Nearest Port



At PII we are very familiar with the requirements of the Buy American Act and have diversified our supply chain to accommodate for these provisions if required. All products we can supply in adherence to the Buy American Act are marked in this brochure with BAA for reference.



Pacific Islands  
International

Delivering quality  
to the pacific



Pacific Islands  
International

Delivering quality  
to the pacific

# CONTENTS

PACIFIC STEEL	03
UAC	07
GYPROC	09
ALTIUS CEMENT	10
PACIFIC PLYWOOD	11
PACIFIC PANELS	13
PACIFIC DOORS	15
BOSTIK	17
PACIFIC CERAMICS	19
ARMSTRONG	21
PACIFIC ACRYLIC	23
SKINROCK	25
PACIFIC BITUMEN	26
BRITEK	27
FLEXTOL	29
PPG	33
NOTES	35





# PACIFIC STEEL

## REINFORCING STEEL

### Deformed Rebar **BAA**

Pacific Steel supplies a complete range of Deformed Reinforcing Bar, also known as Rebar. The purpose of the deformations is to provide a better bond between the concrete and the rebar, which improves the overall strength and stability of the structure. It is popular with both residential and industrial applications.

Each bar is available from 10mm to 36mm diameters.  
Stock lengths range from 6m to 12m



### Reinforcing Mesh **BAA**

Reinforcing Mesh is utilised for walls and concrete floor slabs, it is a reinforcement product that is fabricated from ribbed wires and is ideal when additional strength is required for a chosen direction. Common uses can include warehouses, precast concrete sections, shed slabs, pavement areas, patio slabs and residential/commercial driveways.



## MANUFACTURING WIRE

### Hard Drawn Wire

Hard-drawn wire is the most basic and affordable steel wire available. The term “hard-drawn” simply means the steel has been drawn through the die to the desired diameter with no additional processing or tempering. Hard Drawn Wire can come in black or galvanised.

**Common uses are:**

- Nail Manufacturing
- Fencing
- Ribbed Wire





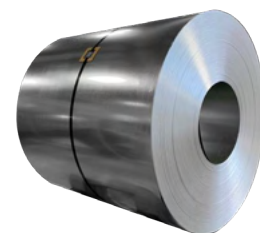
# STEEL COIL

## GI Coil (Galvanised Iron Coil) BAA

GI Coil is produced by passing the Full Hard sheet which has undergone the acid washing process and rolling process through the zinc pot, thereby applying zinc film to the surface. It has excellent corrosion resistance, paintability, and workability due to Zinc's characteristics. Hot-dip galvanizing is the process of applying a protective zinc coating to a steel sheet or iron sheet, to prevent rusting.

Common uses are:

- C & Z Purlins
- Ducting

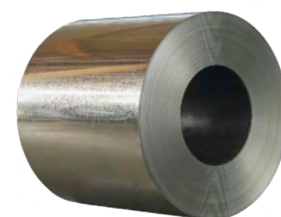


## GL Coil (Galvalume Steel Coil) BAA

GL Coil is produced the same as GI Coil, however Aluminium is added into the galvanising process. Which adds excellent corrosion resistance. With the added protection GL is more suitable for harsh outdoor environments, such as coastal areas.

Common uses are:

- Roofing Sheets
- Metal Framing
- Wall Panelling



## PPGL Coil (Pre Painted Galvalume Steel Coil) BAA

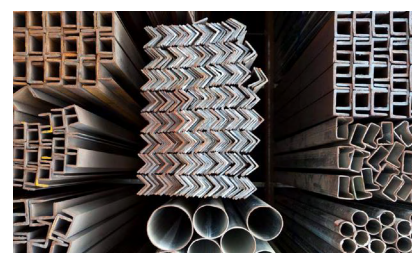
PPGL is GL Coil with added Paint, available in a huge assortment of colours.



# MERCHANT STEEL

Pacific Steel offers a complete range of merchant bar products. This range is crucial to the engineering & fabrication industries. Merchant steel products include:

- Flat Bar
- Equal and Unequal Angles
- Round and Square Bars



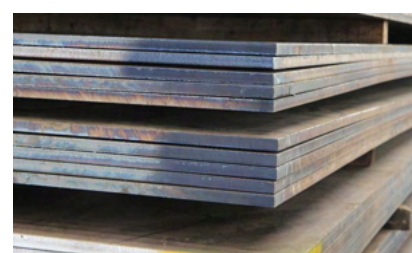
# PIPE AND HOLLOW SECTIONS

Pacific Steel can supply a full range of Circular Hollow Sections (CHS), Rectangular Hollow Sections (RHS) and Square Hollow Sections (SHS).



# STEEL PLATE

Steel plate is a plate of metal, specifically steel, that can be cut and manufactured into a more elaborate product. Steel plates come in a range of thicknesses, and can be manufactured to a length or width that you need, they are typically produced in a smooth or checkered finish.



## FENCING & WIRE

### Barbed Wire

Is constructed with sharp edges or points arranged at intervals along the strands. Its primary use is the construction of security fences.

Razor Wire is also available.



### Tie Wire

One of the most common ways to secure reinforcing bar (rebar) prior to concrete placement. It is used by steel fixers to tie rebar and to secure the reinforcing mesh to bar chairs. Tie wire is also used as a general fastener on construction sites.



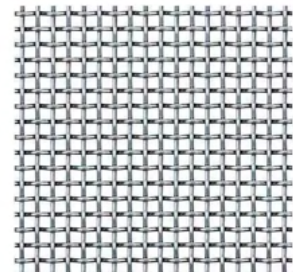
### Chainlink

A fence made of interlocking metal wires that form a diamond pattern. It is commonly used to enclose outdoor areas such as yards, sports fields, and industrial sites. The wires are attached to metal posts to create a durable and secure barrier. Chainlink fencing is known for its affordability, durability, and ease of installation.



### Cocoa Wire

A wire mesh or screen made of stainless steel that is used in the process of making chocolate. It is used to separate cocoa powder and other solid particles from the liquid chocolate during the manufacturing process.



### Mesh Fencing

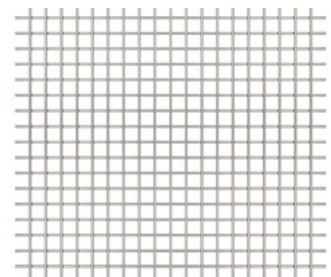
A type of fencing that consists of vertical and horizontal wires. Wires can be interlinked and connected in different ways creating a wide spectrum of designs. The term 'mesh' represents the opening on the fence and the number of openings per linear inch. Common types are;

- Rat Wire Fencing
- Chicken Wire Fencing
- Pig Fencing



### Galvanised G4/G5 Mesh

A type of wire mesh that is made from galvanized steel wire. The G4/5 designation refers to the wire's thickness, which is 4 or 5mm. This type of wire mesh is often used in construction, industrial, and agricultural applications. Its thickness makes it sturdy and durable, able to withstand heavy loads and resist corrosion.





## Star Pickets

Also known as steel fence posts or Y-posts, are pointed metal stakes that are used to support fencing. The other end of the post has a series of small projections, or "stars," which are used to attach fencing wire or other materials to the post.



## Expanded Mesh

A type of metal mesh that is made by cutting and stretching a flat metal sheet. This process creates a lightweight, strong and durable mesh that can be used for a variety of purposes.



## Gabion Baskets

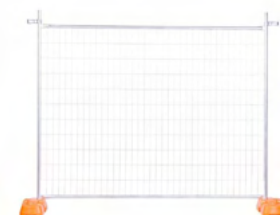
Wire mesh containers filled with rock, concrete, or other materials. They are often used in construction, landscaping, and civil engineering projects. Gabion baskets are typically made of a wire mesh, such as galvanized steel or PVC-coated steel.



# SECURITY FENCING

## Temporary Fencing

Whether you're looking to secure a construction site, control crowds at a special event, or create a safe perimeter for a temporary work zone, temp fencing can provide the protection and security you need. Temp fencing is easy to install and remove, and can be customized to meet your specific requirements.



## Palisade Fencing

With its distinctive "W" shape profile, palisade fencing offers a high level of security while also being an attractive and stylish addition to any property. Made from strong and durable materials, palisade fencing can withstand harsh weather conditions and resist impact and corrosion, making it ideal for use in industrial, commercial, and residential settings.



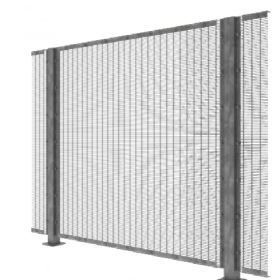
## Speartop Fencing

Its unique spear-shaped pickets give it a distinctive look that is both timeless and modern. Made from durable materials, Speartop fencing can withstand harsh weather conditions and resist impact, making it ideal for use in a variety of settings, including residential, commercial, and industrial properties.



## 358 Security Fencing

A heavy-duty fencing option that offers a high level of security for industrial and commercial properties, as well as high-security facilities like prisons and military bases. Its small mesh size and thick gauge wire make it extremely difficult to cut or climb, making it an ideal choice for areas that require a high level of security.



# UAC

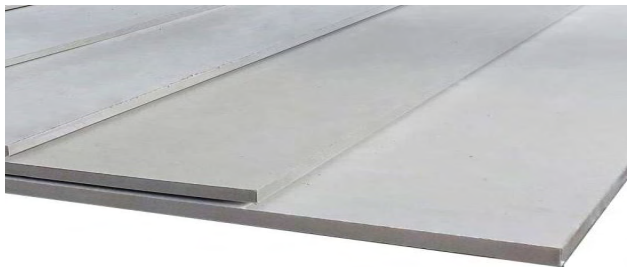
UAC Berhad is one of Asia's top pioneers of a comprehensive range of innovative cellulose fibre cement products, including flat boards, patterned boards, eaves lining, skirting and cornices, smooth and wood-grained planks and panels, woodlike strips, perforated boards, and flush-joinable flat boards.

## CEMENT BOARD

With a wide range of applications spanning the residential, commercial, institutional, industrial, leisure, and hospitality sectors, UAC Berhad provides solutions for ceilings, partitioning, feature wall linings, cladding, fascia, skirting and cornices, decking, flooring, and many more.

### Superflex

The ultimate multipurpose building board. UAC Superflex is suitable for many general building purposes, including ceilings and wall partitions, whether internally or externally. It is ideal for gable ends, façades, eaves lining, soffits, permanent formwork, and substrate flooring.



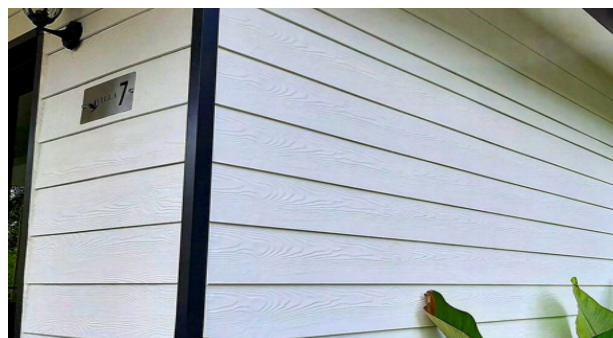
### Flexabord

This Premium board is made for the exclusives who only want the best. It has an unsanded surface and the recessed edge profile makes this the ultimate flush-joinable boards developed to create a homogeneous seamless joint that can be tiled on to an entire wall or ceiling with a smooth, seamless covering. Ideal for use in bathrooms.



### Plank

Plank combines the aesthetics of timber with the hardness and toughness of fibre cement. Coming in 2 variations, Plank Smooth is a non-textured plank for simplicity and naturality, whilst Plank Sedartex Woodgrain is permanently woodgrain-textured to resemble a natural wood plank.



### Flexabord

Vistabord is a versatile and flush-jointable board with a recessed edge that's perfect for creating smooth and seamless walls and ceilings. It can accept a majority of finishes like paint, tiles, wallpaper, and many more.







## Shiplap Plank

Plank Shiplap transforms the appearance of plain walls into a smooth and polished wood covering, smartly assembled for external and internal wall cladding, gable end, feature walls, ceilings, soffits, siding, fencing, fascia, eaves lining, and weatherboarding.



## Supertex Panel

Decorate your walls with the natural wood-like product from UCO Supertex Panel. It is designed to mimic the aesthetics of wood texture eliminating the limitations of timber while being termite and rot-proof.



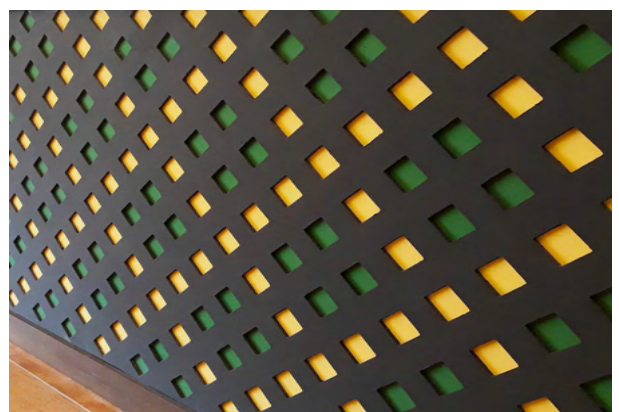
## Decowood

DecoWood is developed with the elegance of natural wood while maintaining the inherent durability and toughness of high-quality fibre cement. It is ideal for both internal and external application. Achieve a long-lasting woodlike finish with suitable paints. It also comes in a variety of widths and thicknesses to fit your construction and renovation needs.



## Lattice

Lattice is a must-have decorative addition to properties to enhance building aesthetics. Versatile, inexpensive, and long-lasting, UAC Lattice comes in two designs, square and diamond, and is suitable to be used as room dividers, pergolas, fencing, privacy screens, windbreakers for barbeque areas and pool sides, feature panels, patios, verandas, and more.





## PLASTERBOARD

Plasterboard is an internal wall and ceiling lining used in residential and commercial lightweight framed construction.

### Residential Range

Products in the high quality Residential range are recommended for use in the majority of non-specialist wall and ceiling applications.

**Gyproc Regular 1/2" & 5/8"**

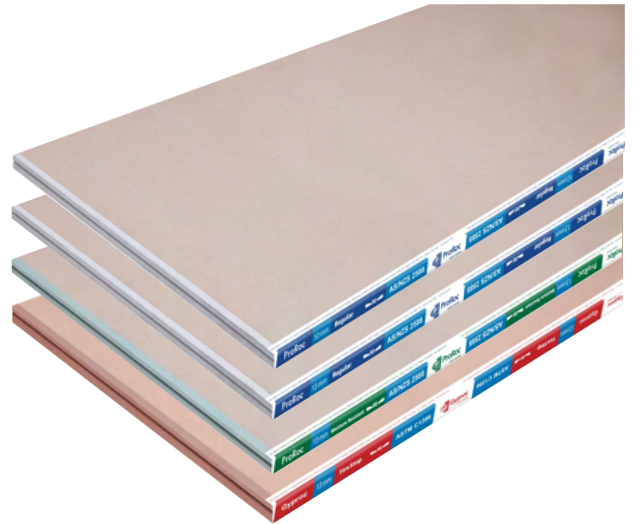
Wall and Ceiling Applications  
2440 x 1220mm (4' X 8')

**Gyproc Moisture Resistant 1/2" & 5/8"**

Wall and Ceiling Applications  
2440 x 1220mm (4' X 8')

**Gyproc Fire Resistant 1/2" & 5/8"**

Wall and Ceiling Applications  
2440 x 1220mm (4' X 8')



### Commercial Range

These Commercial Range of plasterboards are designed to satisfy the majority of basic performance requirements in commercial projects.

**Gyproc Regular 1/2" & 5/8"**

Wall and Ceiling Applications  
2440 x 1220mm (4' X 8')

**Gyproc Moisture Resistant 1/2" & 5/8"**

Wall and Ceiling Applications  
2440 x 1220mm (4' X 8')

**Gyproc Fire Resistant 1/2" & 5/8"**

Wall and Ceiling Applications  
2440 x 1220mm (4' X 8')





## ALTIUS PORTLAND CEMENT

### C150 Type I

The standard product that has long been in use with no limitation on the proportions of the major oxides, most commonly referred to as “Ordinary Portland Cement.”

### C150 Type II

This cement possesses moderate resistance to sulfate attack because of certain limitations on composition. Sometimes called moderate-heat cement, it is intermediate between Type I and the low-heat Type IV cement.

### C150 Type III

High-early-strength Portland Cement is often produced by grinding Type I clinker finer or by altering the chemical composition of the cement.





Plywood is a versatile and durable building material made from thin layers of wood veneer, glued together under pressure. It is strong and stable, making it ideal for construction, furniture making, and DIY projects. Whether you're building a new home, a bookshelf, or a craft project, plywood is the perfect choice for your needs. With its smooth surface and uniform thickness, it is easy to work with, and it is available in a variety of grades and sizes to suit any budget.

## Common Ply

When looking for a quality 'Interior Grade' Plywood, look no further than Pacific Common Grade Plywood. Common Grade is made up of a full length Poplar Core, moisture resistant glue and B/C grade Bintangow face/back veneer. Suitable for most Internal applications where exposure to outside elements is limited.

## Builders Grade

The ONLY choice when it comes to general purpose Plywood! Pacific 'Builders Grade' Plywood is comprised of a Poplar Core, Exterior Grade Glue and is available in a selection of B/C Grade veneers including Okoume, Bintangow, Birch and Kaori. This grade is offered as the next step up from 'Common Grade' and is suitable for most general purpose Interior & Exterior applications.

## Hardwood

Pacific 'Hardwood' Plywood is the premier choice of genuine Hardwood Plywood available in the Pacific region. Comprised of a Mixed Tropical Hardwood full length Core and Exterior Grade glue, Pacific 'Hardwood' Plywood is made with only quality and durability in mind.



## Marine Grade

Pacific 'Marine Grade' Plywood is manufactured and complies with BS1088 Standard. Our Marine Grade is available with & without BS1088 certification depending on your requirement. Comprised of a full length Hardwood Core, WBP Phenolic Glue, Okoume Veneer both sides Pacific 'Marine Grade' Plywood is perfectly suited for most Marine applications

## Form Ply

Form Ply by Pacific Plywood fulfills your basic formwork needs - suitable for 1-3 uses. Comprised of a softwood core, black film and Exterior Grade Glue, Form Ply is a competitively priced reliable option for basic applications.

## Form Ply Plus

When looking for a higher grade, more re-useable Form Ply, look no further than Pacific Plywood's Form Ply Plus. This grade is re-useable up to 10-12 times with a Brown Dynea Film, Hardwood Core and WBP Phenolic Glue and can withstand harsh environments.





## Glasswool Wall Batts BAA

- Light weight, flexible, resilient, quick installation
- Superior Thermal and Acoustic Performance
- Density:  $10\text{kg/m}^3 \sim 32\text{kg/m}^3$

### Application

- In House Wall Thermal and Acoustic Insulation.
- Internal and external wall insulation.
- Duct Insulation.
- Equipment insulation.



## Glasswool Ceiling Batts BAA

- Light weight, flexible, resilient, quick installation
- Superior Thermal and Acoustic Performance
- Density:  $10\text{kg/m}^3 \sim 32\text{kg/m}^3$

### Application

- In House Ceiling Thermal and Acoustic Insulation.
- Ceiling wall insulation.
- Duct Insulation.
- Equipment insulation.



## Plain Glasswool Building Blanket BAA

- Light weight, flexible, resilient, quick installation
- Superior Thermal and Acoustic Performance
- Density:  $10\text{kg/m}^3 \sim 32\text{kg/m}^3$

### Application

- In House roof, wall and floor Thermal and Acoustic Insulation.
- Duct Insulation.
- Equipment insulation.
- Roof and external wall insulation.



## Foil Faced Glasswool Building Blanket BAA

- Light weight, flexible, resilient, quick installation
- Superior Thermal insulation performance, vapor barrier.
- Facing material: aluminum foil, reinforced aluminum foil.
- Density:  $10\text{kg/m}^3 \sim 32\text{kg/m}^3$

### Application

- Duct Insulation.
- Equipment insulation.
- Roof and wall partition insulation



## Fire Resistant Glaswool Building Blanket BAA

- Has been tested for fire rating Silicate Board Assembly.
- High performance acoustic insulation.
- Easy application.
- Density:  $20\text{kg/m}^3 \sim 32\text{kg/m}^3$

### Application

- In House roofing and wall partition Insulation



## Formaldehyde Glasswool Building Blanket BAA

- Formaldehyde Free
- Density:  $10\text{kg/m}^3 \sim 96\text{kg/m}^3$

### Application

- Hospital, hotel with special requirement project.





Pacific Doors manufacture a large variety of fire doors, non rated doors and metal clad doors. Utilising our manufacturing facility we can design and produce to suit your specific needs including special door veneers and finishes.

## HOLLOW CORE DOORS

### HCD Collection

These superior doors come with a unique, high density honeycomb core construction that will add that touch of class to your home. Available raw or primed, ready to paint to suit your taste, there are bi-fold and multi-fold options available as well as made to order options in a vast range of sizes. These flush doors are suited to both contemporary and traditional style homes.

- Plywood or MDF
- High density honeycomb core
- Primed ready to paint
- Flush finish
- Modern Design
- Available in all sizes



## SOLID CORE DOORS

### SCD Collection

These superior doors come with a unique, solid core construction that will add that touch of class to your home. Available raw or primed, ready to paint to suit your taste, there are bi-fold and multi-fold options available as well as made to order options in a vast range of sizes. These flush doors are suited to both contemporary and traditional style homes.

- Plywood or MDF
- Solid construction
- Primed ready to paint
- Flush finish
- Modern Design
- Available in all sizes

## MOULDED PANEL DOORS

### MDD Collection

MDD Collection is the most popular range we can supply. The door faces feature embossed smooth moulded panel designs. The look of joinery doors at a fraction of the cost and with matching bi-fold and robe doors to complete the fitout.

- MDF Moisture Resistant Grade Molded Panel Skin
- Oak grain texture with white primed surface
- Durable and easy to maintain
- Primed ready to paint
- Contemporary and traditional design
- Available in all sizes



Denmark

Carmelle

Vienna

Caprice

Pacific





## MDF MELAMINE PREFINISHED DOORS

### MDF Collection

Allow the natural beauty of timber to enrich your home with the MDF Melamine range of doors. Inspired by contemporary European trends, these striking designs will add a unique style to any home.

- MDF Melamine Flush Door Skin
- Prefinished Vertical Grain
- Solid and Hollow Core

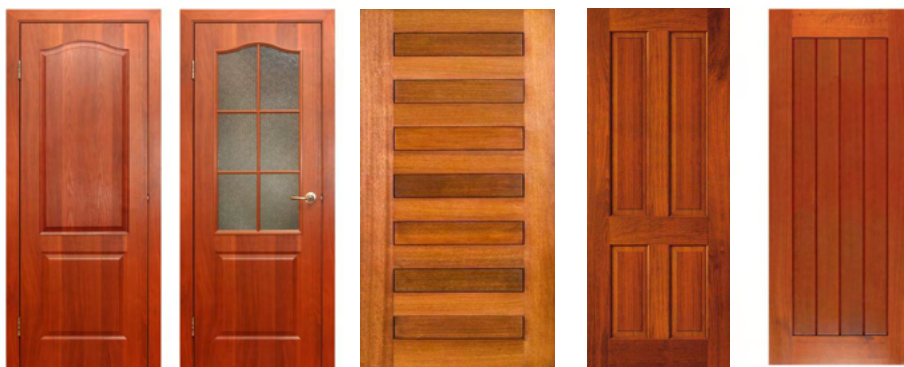


## SOLID TIMBER DECORATIVE DOORS

### SD Collection

Solid Timber Decorative doors have elegant designs with simple classic details, all joints are perfectly fitted for sturdy structure with high quality finish. The panels are made of high quality solid wood, machines and sand to give a luxury feel and finish.

- Solid Timber Doors
- Durable and easy to maintain





# Bostik

smart adhesives

A comprehensive adhesive offering for the construction industry, providing reliable, flexible and waterproof joints for a broad range of applications.

## TILE ADHESIVE

At Bostik, we offer a comprehensive system of tile adhesives for professional tilers, specifiers and architects, as well as DIYers. Our range covers ceramic tile adhesive, porcelain tile adhesive, natural stone tile adhesive and mosaic tile adhesive.

### Ecofix

This is a rigid set, cement based adhesive suitable for most types of ceramic wall and floor tiles including monocottura, slate, quarry tiles, terracotta and natural stone. Ecofix is suitable for thin and thick bed applications onto rigid substrate, including concrete, cement render, brickwork and blockwork.



### Fixall

This is a rigid set cement based adhesive suitable for most types of ceramic wall and floor tiles including monocottura, slate, quarry tiles, terracotta and natural stone. Fixall is suitable for thin and thick bed application onto rigid substrates, including concrete, cement render, brickwork and blockwork.



### Superfixall

This is an exceptionally high strength cement based adhesive developed to bond all types of ceramic tiles. Ideal for bonding monocottura and fully vitrified tiles, as well as natural stone, marble, granite and mosaic tiles onto brickwork, cement render and concrete walls and floors.



### Excelflex

This is a high strength powdered adhesive for wall and floor applications. Suitable to use over concrete, cement render, screeds, fibrous cement sheeting and Bostik approved waterproof membranes. Excelflex is recommended for all internal and external applications. Excelflex MY is suitable for all types of tiles.



### Ultra Mastik

This is premium tile adhesive with superb bond on 600mm x 600mm tiles. Smooth feel for easy trowelling. It is a flexible powdered adhesive which is suitable for commercial, high traffic areas, external and internal tiling.



### Tile Grout

This is a special formulated colour grout for filling joints between tiles and natural stone. It is made by select grades of UV stable pigments, proprietary additives and polymers, portland cement and graded aggregates as in the case of tile joint filler (sanded colour grout).





# SILICONES

## Fill A Gap A330

Bostik A330 FILL A GAP FLEX was specifically developed for sealing connection joints between stairs, walls, ceilings, skirtings, windowsills, wooden and metal window frames, concrete and brickwork. For interior use.



## Bostik S546 Kitchen & Bathroom

Bostik S546 Kitchen and Bathroom is a versatile neutral silicone sealant for sanitary and kitchen applications which cures by reacting to moisture to form a durable elastic rubber seal.



## Bostik S551 Roof 'N' Seal Gutter

Bostik S551 Roof 'N' Seal Gutter is single component, low modulus, neutral curing silicone that provides excellent adhesion to many common substrates especially all roofing and gutter substrates.



## Bostik PU Construction

Bostik PU Construction Sealant is a one-component, medium-modulus polyurethane sealant that cures on exposure to atmospheric humidity.



## Fireban Acrylic

Bostik Fireban Acrylic is a single component, non-sag, fire rated acrylic based gunnable sealant. A general purpose product for construction joints and the sealing of service penetrations in plasterboard, concrete floors and masonry wall constructions.



## Fireban One

Bostik Fireban One is a fire rated intumescent, low modulus, one component, Class-A polyurethane sealant. When cured it will form a tough, flexible fire rated seal capable of cyclic expansion and compression movement of 50% (25%) of the original installed joint width.

# WATERPROOFING

## Boscocem Slurry

Boscocem Slurry is a cement-based two-component acrylic reactive polymer modified waterproofed coating. Boscocem Slurry is highly effective for positive side waterproofing.



## Boscoflex

Boscoflex is a two-component polymer modified liquid applied flexible cementitious waterproof coating. The two components are simply mixed together to create a workable consistency for easy application. It has superior adhesion to many substrates, including concrete and cement render.



## Boscoseal PUX

Boscoseal PUX is an elastomeric liquid applied hybrid PU styrene acrylic dispersion based waterproof coating formulated to give a long-lasting, maintenance free and superior waterproofing coating protection for concrete substrates.





# PACIFIC CERAMICS

Elevate your living or working space with Pacific Tiles' high-quality flooring solutions that perfectly match your unique style. Our signature tiles are versatile, and perfect for both residential and commercial use. With a wide range of innovative designs, including cove tiles, stone look tiles, shower floor tiles, timber look tiles, commercial tiles, and large floor tiles, we cater to every style and functional need. Choose from our extensive collection of porcelain and ceramic tiles and transform your space into the haven you always imagined.

## CERAMIC WALL AND FLOOR TILES

Our ceramic tiles are a versatile and popular choice for many homeowners and designers. Available in a wide range of colors, these tiles provide a simple yet stylish backdrop that can complement any decor style. They are durable and easy to clean, making them a practical choice for high-traffic areas such as kitchens, bathrooms, and entryways.

### Sizes Available:

150 x 150mm  
200 x 200mm  
300 x 300mm  
300 x 600mm  
600 x 600mm

Custom sizes and colours  
available upon request.

### Features:

- Durable
- Water Resistant
- Scratch Resistant
- Easy to Maintain
- Versatile
- Cost Effective

## Plain Solid Colour Series





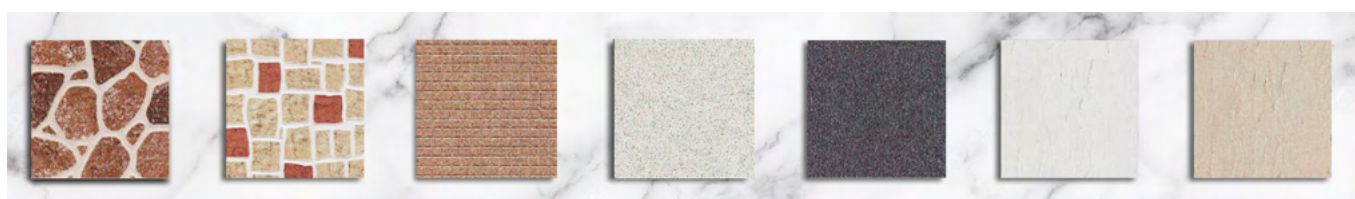
## Patterned Series



## Gloss Series



## Outdoor Series



# Armstrong®

## CEILING SOLUTIONS

Ceiling Solutions that help to transform spaces visually, acoustically & sustainably.

### MINERAL FIBRE ACOUSTIC CEILING SYSTEMS

#### Fine Fissured RH99 & Fine Fissured High NRC RH99

600 x 600 x 16mm  
1200 x 600 x 16mm  
Available in Square and Tegular Edge

- Cost Effective
- RH99 Humidity Resistant
- High Sound Absorption
- High Light Reflective



#### Dune / Dune Max

600 x 600 x 16 / 20mm  
1200 x 600 x 16 / 20mm  
Available in Square and Tegular Edge

- Modern Look
- Fine Texture Surface
- RH99 Humidity Resistant
- High Sound Absorption
- High Light Reflective



#### Ultima

600 x 600 x 19mm  
1200 x 600 x 19mm  
Available in Square and Tegular Edge

- Ultimate option in Ceiling Tiles
- Excellent Sound Absorption
- Scratch Resistant Face
- Smooth White Surface





# PEAKFORM SUSPENDED CEILING GRID

PeakForm is a comprehensive range of medium duty, roll formed, galvanised steel suspended ceiling grid solutions, designed to meet most commercial design requirements.

## PeakForm Prelude XL 24mm

- Main Bar 43 x 24 x 3600mm
- Cross Tee 30 x 24 x 600mm
- Cross Tee 35 x 24 x 1200mm
- Wall Angle 36 x 19 x 3600mm



## MetalWorks Baffles

MetalWorks Ceiling Baffles provide a multitude of linear, open plenum design options – limited only by imagination.

Flexible design options using standard or custom Baffle profiles, finishes, modules and configurations – for the open plenum ceiling.

### Benefits

- A multitude of design options using standard or custom profiles, lengths, finishes, modules and configurations, limited only by imagination
- Attractive linear ceiling system that screens the open plenum
- Fast and easy installation
- Durable extruded aluminium Baffle profiles
- Heavy duty U-Profile Suspension Channel
- Extensive range of colour options, including Wood Effects
- Simple “end to end” Baffle connection or terminate with standard End Cap



### Typical Applications

- Open plan spaces
- Foyers / lobbies
- Reception areas
- Waiting areas
- Airports / Transport terminals
- Meeting rooms
- Restaurants





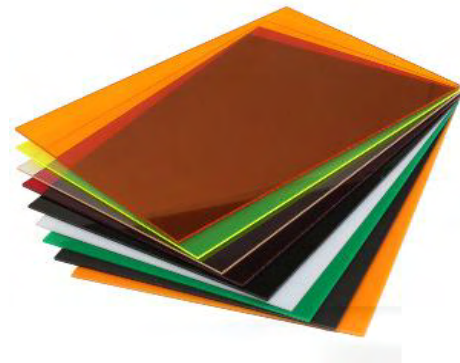
Acrylic is a transparent plastic material with outstanding strength, stiffness, and optical clarity. Acrylic sheet is easy to fabricate, bonds well with adhesives and solvents, and is easy to thermoform. It has superior weathering properties compared to many other transparent plastics.

## ACRYLIC

Acrylic sheet exhibits glass-like qualities—clarity, brilliance, and transparency—but at half the weight and many times the impact resistance of glass. From durable signs and skylights, to eye-catching retail store fixtures, displays and shelves, acrylic plastics provide outstanding versatility, durability, and aesthetic qualities.

### Acrylic is widely used for:

- Windows
- Splashbacks
- Indoor and outdoor signs
- POP displays and exhibits
- Architectural glazing, skylights
- LED diffusing lighting panels
- Transportation applications
- Brochure holders
- Shelves and retail fixtures



### Performance characteristics:

- Strong, stiff, optically clear
- Easy to fabricate, machine, and thermoform
- Easy to solvent bond
- Good dimensional stability
- Good weathering



Over 50 colours available







# MATRIX KITCHEN BENCHTOPS

An exclusive high pressure laminate worktop which is designed to fit your home and living comfort. With the extraordinary profile and contour that is natural, it is the ideal durable element which features style, substance and quality.

- Economical
- Water Resistant
- Stain Resistant
- Scratch Resistant
- Easy to Maintain
- Easy to clean
- Easy to Install
- Durable
- Modern Look



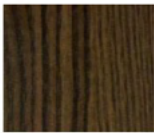
DESIDERIA



CARALINA



CINDE SAWCUT



NICE OAK



GESSO LINI



ARTISIAN OAK



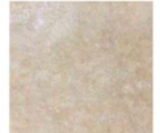
SOFT WOODLINE



AXIS IVORY



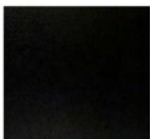
CARRARA



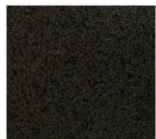
PALATINO



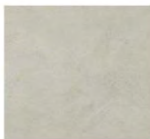
POLAR WHITE



EBONY BLACK



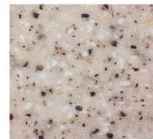
SOMERSTONE



FRENCH STONE



ANDO CEMENT



IRON STONE



SMOKEY QUARTZ

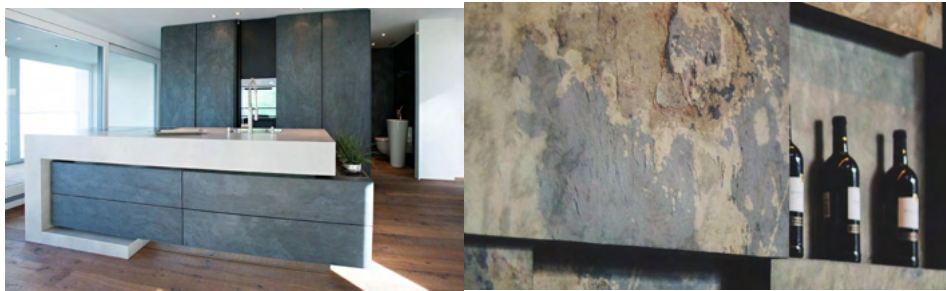


PHANTOM QUARTZ



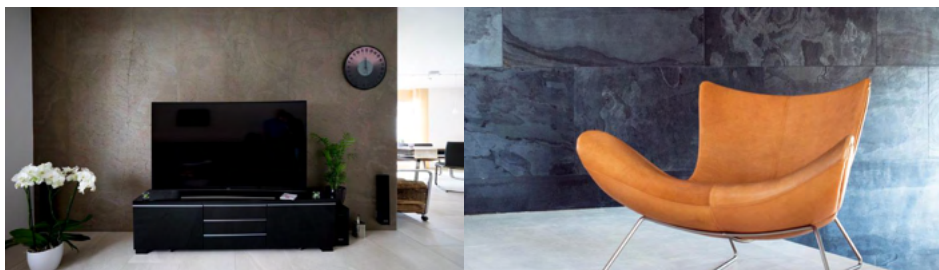
# SKINROCK

Skinrock is a natural stone, slate or quartz panel, used for decorative applications.

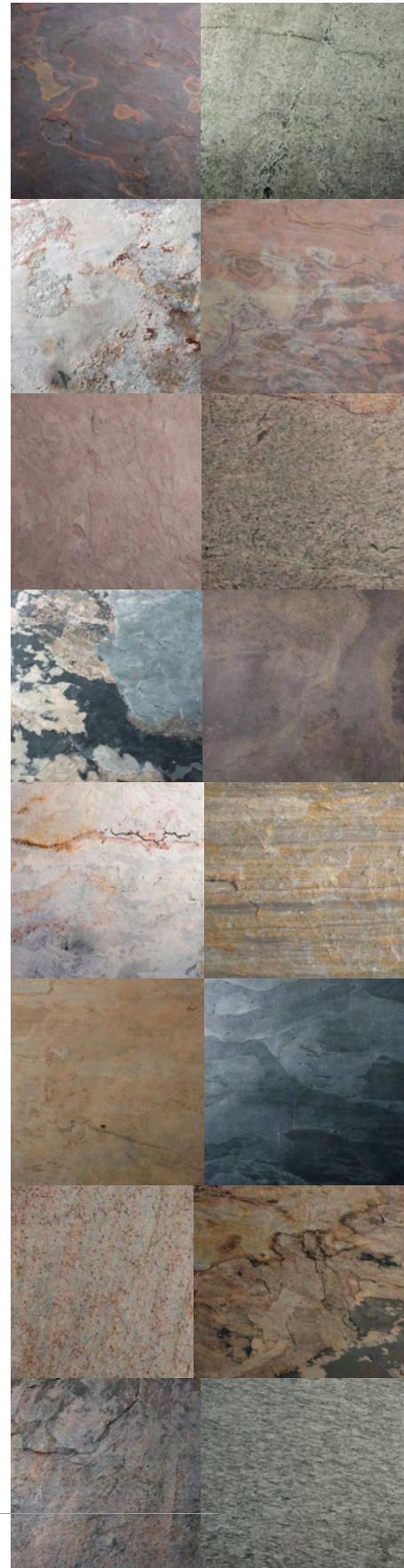
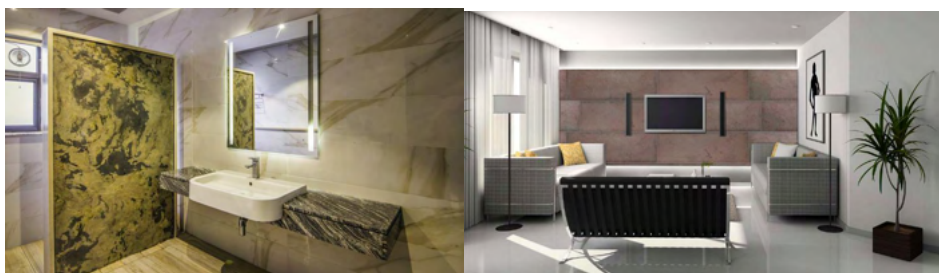


Skinrock consists of a split-off layer of natural slate or quartzite and a polyester backing with glass fiber for strength and to ensure dimensional stability. The natural stone with its natural colours makes every square inch a one of its kind.

This opens up new, unlimited opportunities on almost all surfaces. Available in 17 different decors, in natural slate and quartzite, elegant silver tones to green, grey and black shades.



Sinrock sheets are extremely lightweight and can be installed on almost any surface. This opens up new, unlimited opportunities to create the ambience of natural stone on drywall, wood, metal, fiberglass, ceramic and concrete. We currently offer 17 different versions in natural slate and quartzite ranging from elegant silver tones to green, grey and black shades.





## BITUMEN CLASS 170 & 320

Paving grade bitumen manufactured to a tighter specification than prescribed in AS 2008 and is suitable for standard sealing and lightly trafficked asphalt applications. Bitumen used in road construction and maintenance are refined and blended to meet strict road engineering requirements and industry specifications. Paving grade bitumen's are categorised according to viscosity (degree of fluidity) gradings.

Class 170 is widely used in sprayed sealing and light asphalt applications to provide durability and fatigue resistance. It is also used to manufacture cutback bitumen, bitumen emulsions and modified bitumen. Class 320 is most commonly used to manufacture asphalt mixes while Class 600 is primarily used to manufacture extra heavy-duty asphalt pavements that need to endure substantial traffic loadings.



## PENETRATION GRADE BITUMEN

The penetration grades bitumen is refinery bitumen which is produced by different viscosity. In fact, Penetration bitumen is semi hard black material known as petroleum grade bitumen. The penetration test is carried out to characterize the bitumen, based on the hardness. Therefore, it has the name penetration bitumen.





# BRITEX

*innovating since 1938*

Britex is Australia's premier manufacturer and supplier of stainless steel products for commercial building projects.

## Education

Child Care / Primary / Secondary / Tertiary

Education products are designed according to the specification guidelines set out by state education departments. Where a state's Department of Education specification document outlines a unique design that differs from other states, this has been noted. Education products are generally vandal resistant, functional, hard wearing, easy to maintain and incorporate numerous unique safety features.



## Security

Police Stations / Detention Centers / Jails

These products have been selected as the fixtures most suitable for security projects in that they are highly resistant to deliberate acts of force, tamper resistant and are, in many cases, free of ligature points. Common features of these designs include fully enclosed plumbing connections, entirely welded constructions and low profile or timed flow tapware options.



## Health Science

Hospitals / Laboratories / Aged Care / Medical Centres

Britex has developed this product range over many years spent in close consultation with Australia's premier Health / Science design Architects. Included in this range are specially designed benches, troughs, basins, flushing sinks and waste disposal fixtures. They are designed to meet the strict documented guidelines set out by Health Professionals for their unique intended use. For this reason, Britex products are consistently selected by designers for inclusion in Australia's finest hospitals, research institutes and medical facilities.



## Public Amenities

Stadiums / Public Toilets / Pavilions / Night Clubs

Britex understands the importance of incorporating vandal resistant, low-maintenance, water efficient products into public amenity designs without compromising on aesthetics. These products are all robust, hard wearing, easy to maintain and can be found all over Australia in sports stadiums, entertainment venues, pubs, clubs, train stations and public toilet blocks.





Lab Tapware



Time Flow Tap



Timed Flow Pillar Tap



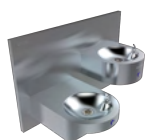
Surgical Tapware



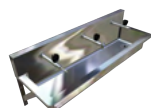
Bubbler



Drinking Bubbler



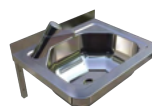
Dado Drinking Fountain



Drinking Trough



Freestanding Drinking Fountain



Compact Hand Basin



Security Hand Basin



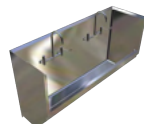
Hand Basin



Recessed Security Basin



Cleaners Sink



Surgeon's Scrub Trough



Oval Security Basin



Security Combination Unit



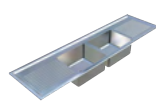
Accessible Hand Basin



Multi Inset Basin



Dirty Utility Sink



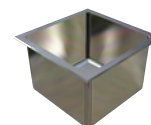
Twin Centre Lab Sink



Double Bowl Sink



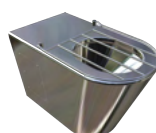
Flat Benches



Lab Bowl



Centurion Pan



Centurion Slophopper



Toilet Suite



Regal Urinal



Sanistep Urinal



Regency Urinal



Squat Pan



Wall Hung Urinal Trough



Pull Chain Cistern



Security Shelving



Flushing Floor Waste



Detention Basin Set



Security Spine



Vandal Resistant Security Shower Set



Security Mirror



Framed Shelf Mirror



Polished S.S. Mirror



Baby Change Table



Flextool offers a complete range of quality professional concrete, construction and landscaping equipment. From soil compaction to concrete vibration and concrete power finishing, Flextool has the products you need to help complete any job from start to finish.

## SITE PREPERATION

### Pumps

Flextool Pumps are highly efficient submersible units which are operated by petrol or diesel portable drive units.

General Purpose / Abrasion Resistant / Chemical Resistant

6 / 9m



### Drive Units

Flextool Drive Units are designed for use in the construction, hire, mining and manufacturing industries.

Standard / Super / Heavy-Duty

Petrol / Diesel



### Tamping Rammers

Flextool Tamping Rammers are perfectly balanced to deliver hard hitting compaction while ensuring optimised operator comfort and product transportation.

46kg / 64kg / 75kg / 93kg

Petrol / Diesel

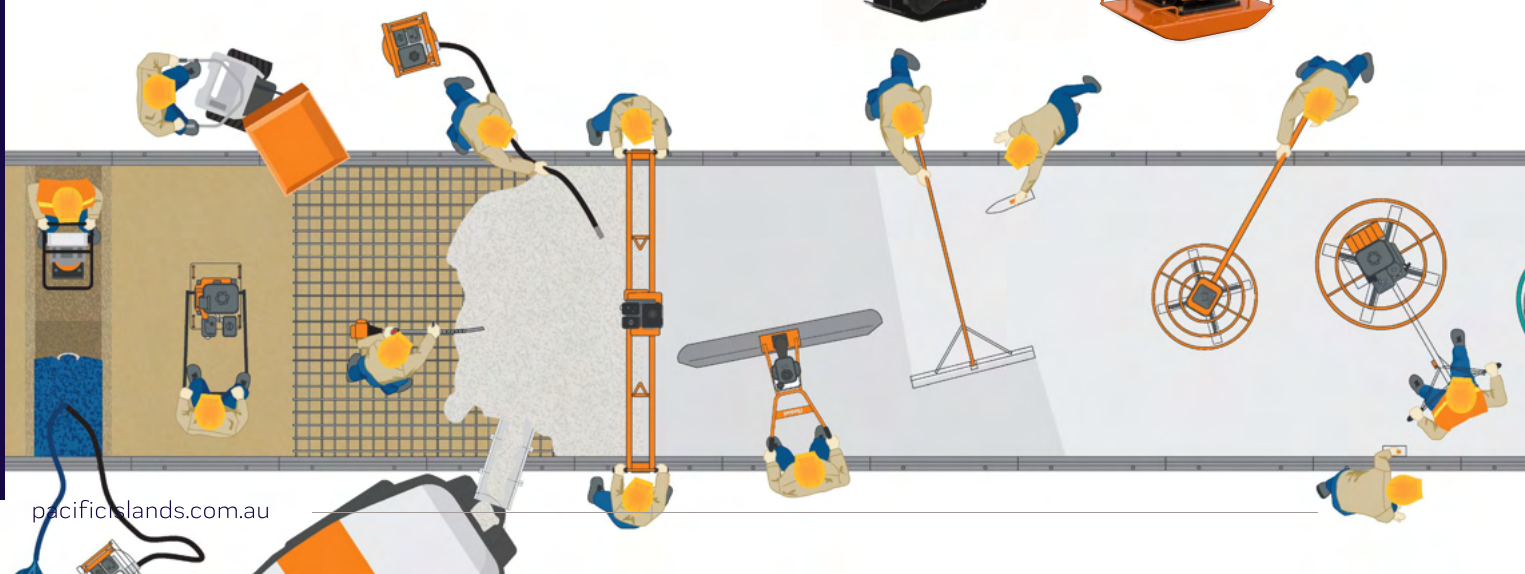


### Plate Compactors

Flextool Plate Compactors set the standard for the compaction of sub-bases and asphalt.

48kg / 50kg / 73kg / 81kg / 87kg / 91kg / 103kg

Petrol / Diesel



# CONCRETE PLACING

## Vibrators

Flextool Flexshaft Concrete Vibrators produce high-frequency vibration allowing for the efficient compaction of all types of concrete mixes.

28mm / 38mm / 50mm / 60mm x 6 / 9m

Steel or Rubber Tip



## PortaVibe

The Flextool PortaVibe provides the ultimate solution in concrete vibration. The new contoured engine protection guard offers improved durability and engine protection during operation and transport.

44mm

Petrol



## PortaScreed

The Flextool PortaScreed FPS-3 delivers accurate and high-quality screeding that is much faster than traditional screeding methods.

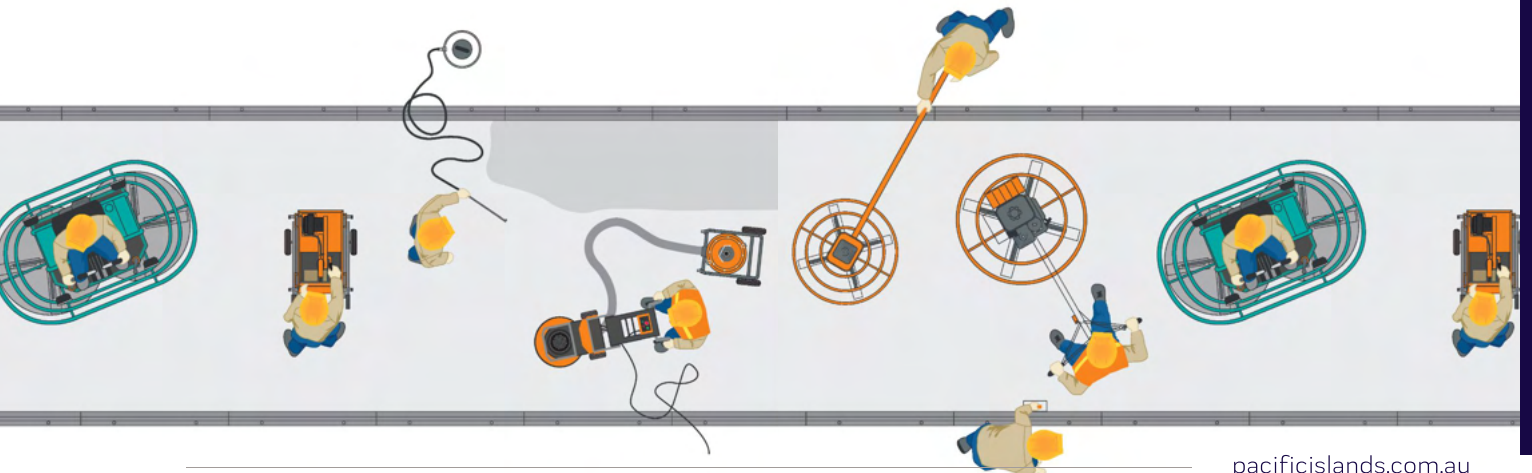
Petrol



## Double Beam Screed

Flextool Double Beam Screeds are an efficient means of levelling and compacting large areas of concrete.

Petrol



## CONCRETE FINISHING

### PortaTrowel

The Flextool PortaTrowel's lightweight design improves operator safety and allows for earlier commencement of concrete finishing when compared to heavier walk-behind machines.

30°



### Power Trowels

The Flextool Walk-Behind Power Trowels are available in 34" and 40" working widths. These trowels are robust, durable and safe concrete power finishing units.

34" / 40"



### Pro Finish Power Trowels

The Flextool Profinish Walk-Behind Power Trowels are built for the professional tradesmen.

30°



## CONCRETE CUTTING

### Brick & Masonry Saw

The Flextool Brick & Masonry Saw offers high precision cutting of bricks and building blocks. It is easy to set up and transport.

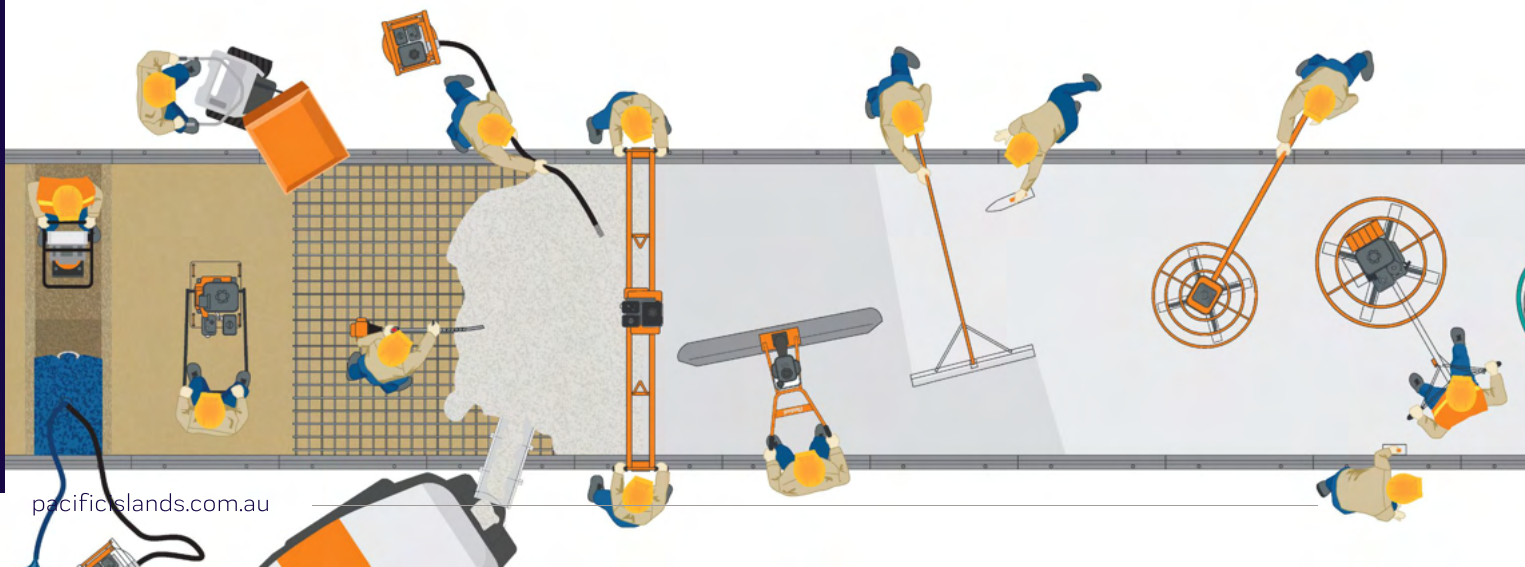
Electric 240V



### Diamond Blades

Flextool's blades provide a fast efficient cutting with a wide range of blades from combination to turbo rim blades.

Brick / Concrete / Combination / Asphalt / Early Cut / All Cut





# SURFACE PREPERATION

## Cub Grinder

The Cub Grinder is compact in design and delivers exceptional grinding capability across a wide range of applications.

450mm  
Electric 240V



## Grinding Shoes

The Flextool Grinding Shoes are compatible with the Flextool Cub Grinder

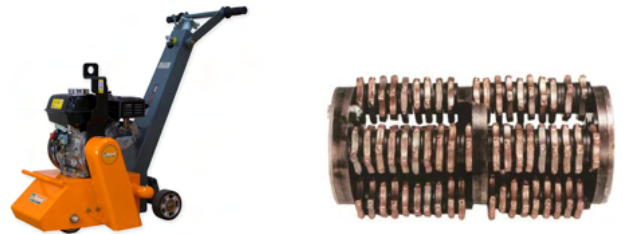
Soft / Medium / Hard



## Surface Scarifier

The Flextool Scarifier FSP-200 is designed for use on all concrete and asphalt surfaces.

Petrol

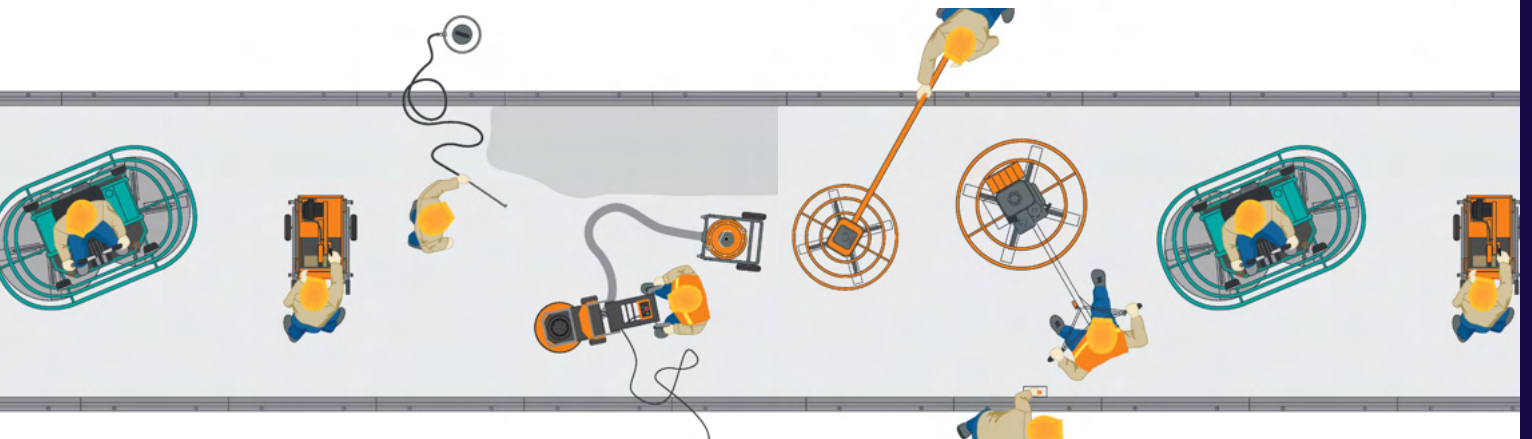


# HAND TOOLS

Flextool offers a wide range of concrete hand tools from Pointed trowels to edgers.

- Pointed Trowels
- Square Trowels
- Steel Floats
- Magnesium Floats
- Wood Floats
- Marble Sheen Trowels
- Concrete Edgers
- Vee Jointers

- Concrete Rakes
- Concrete Shovels
- Concrete Screed
- Handles
- Bullfloats
- Brooms
- Walking Trowels





PPG is a global manufacturer of paints, coatings, and speciality materials and a Fortune 200 company with headquarters in Pittsburgh and operations in nearly 70 countries around the world.

## Automotive

As one of the world's leading producers of advanced automotive paint systems, PPG provides customers with a wide range of product options featuring specific properties to suit virtually any application.



## Industrial Coatings

PPG continuously develops innovative products which enhance customers' revenue streams through new aesthetics, enhanced performance properties and increased application efficiency. PPG has an integrated global team of professional colour stylists, chemists and technical application experts to help manufacturers to turn new coatings technologies into viable products which will integrate seamlessly into global supply chains.



## Protective and Marine Coatings

PPG is widely recognised as a world leader in protective and marine coatings, developing innovative, cutting edge products and services that are designed to deliver value for money and protect customers' assets.



## AMERLOCK 400 Epoxy Coating

Amerlock is the high-solids (85%), high-build epoxy protective coating that has revolutionised maintenance painting in tough industrial, marine and offshore environments around the world. Amerlock coatings are especially formulated to solve complex corrosion problems with minimal preparation. For durable, dependable protection from chemicals and corrosion in a variety of industrial and Infrastructure applications, there is an Amerlock coating for every maintenance job - even yours.





## Sigmaprime

Universal primer – increased environmental compliance. The SIGMAPRIME range offers excellent water and corrosion resistance when applied to steel and non-ferrous metals, exhibiting excellent adhesion, flow and wetting properties, as well as outstanding crack resistance and edge retention. It provides exceptional anti corrosive protection due to its excellent adhesive qualities on shop primer, steel (blasted or mechanically pre-treated), aluminum, stainless steel, galvanized steel and hydro-jetted surfaces. The SIGMAPRIME universal primer can also be overcoated with virtually all other coating types, such as epoxy, polyurethane, acrylic, alkyd, chlorinated rubber, vinyl and fire retardant.



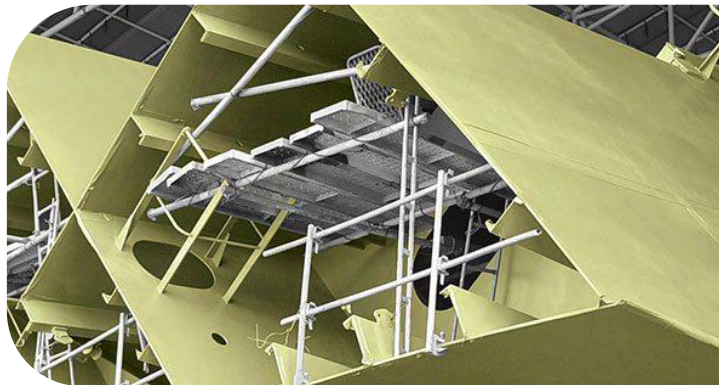
## Sigmarine 48

General purpose gloss finish, cost effective above-water protection. SIGMARINE 48 is an economical finish coat that fits this scenario perfectly and helps to present a good corporate image whilst protecting the asset. This coating provides value for money, asset protection, and a professional appearance combined with minimal application cost and reduced application effort.



## Sigmadur 550

Hard working coatings with a long lasting finish PPG SIGMADUR 550 is an aliphatic acrylic polyurethane gloss finish coat designed to protect the most visible surfaces where lasting, high-quality appearance is every bit as important as protection. Packed with a number of high-performing characteristics, it is the perfect choice for a variety of situations, including those in the toughest environments, such as offshore platforms, the exterior of oil and gas storage tanks, bridges, stadia, amusement parks, wind and transmission towers.



## Sigmashield 880

Multipurpose surface tolerant epoxy for protecting assets in extreme industrial and marine environments. As a fast drying, single coat system, PPG SIGMASHIELD 880 speeds up the coating process and minimizes downtime. Application is simplified further by the coating's high surface tolerance (suitable for damp or wet-blast clean substrates), extended recoat window and high film thickness that is achieved in just one coat.









MICK FINN HOUSE  
1/12 Northern Link Circuit,  
Townsville, Qld, 4818 Australia

P +61 7 4412 6800  
E sales@pacificislands.com.au  
pacificislands.com.au